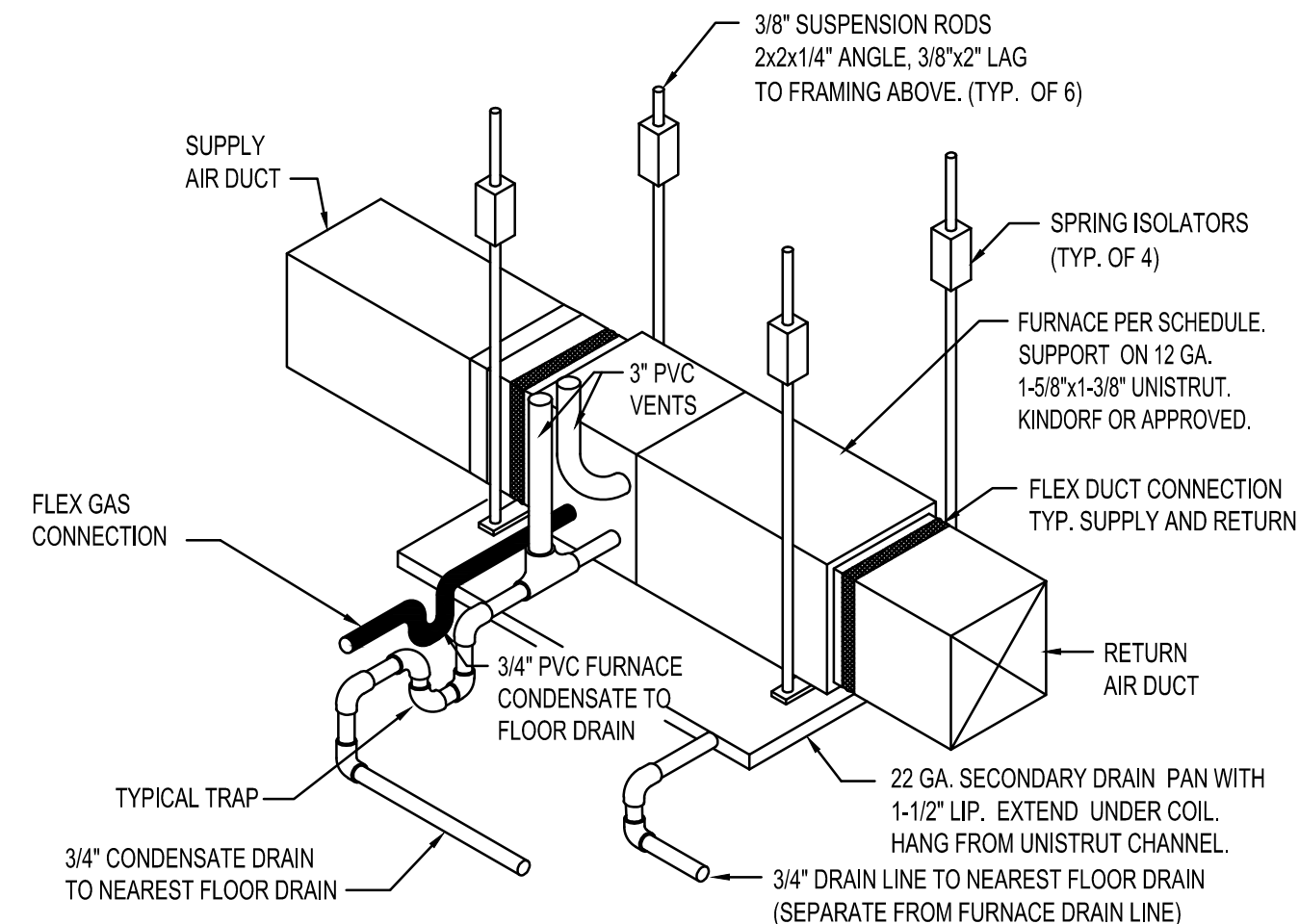


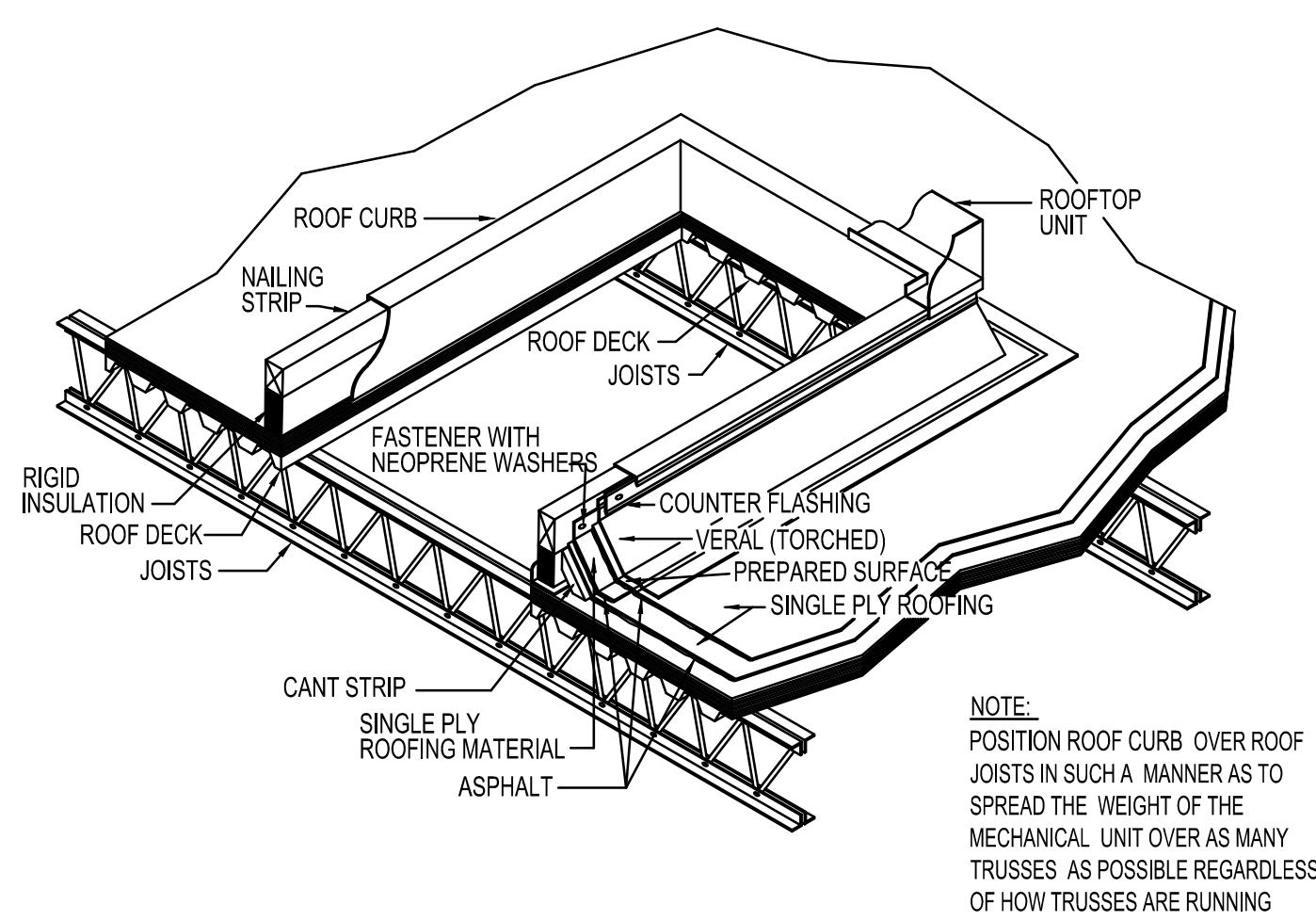
A RECTANGULAR DUCT CONNECTION

NO SCALE



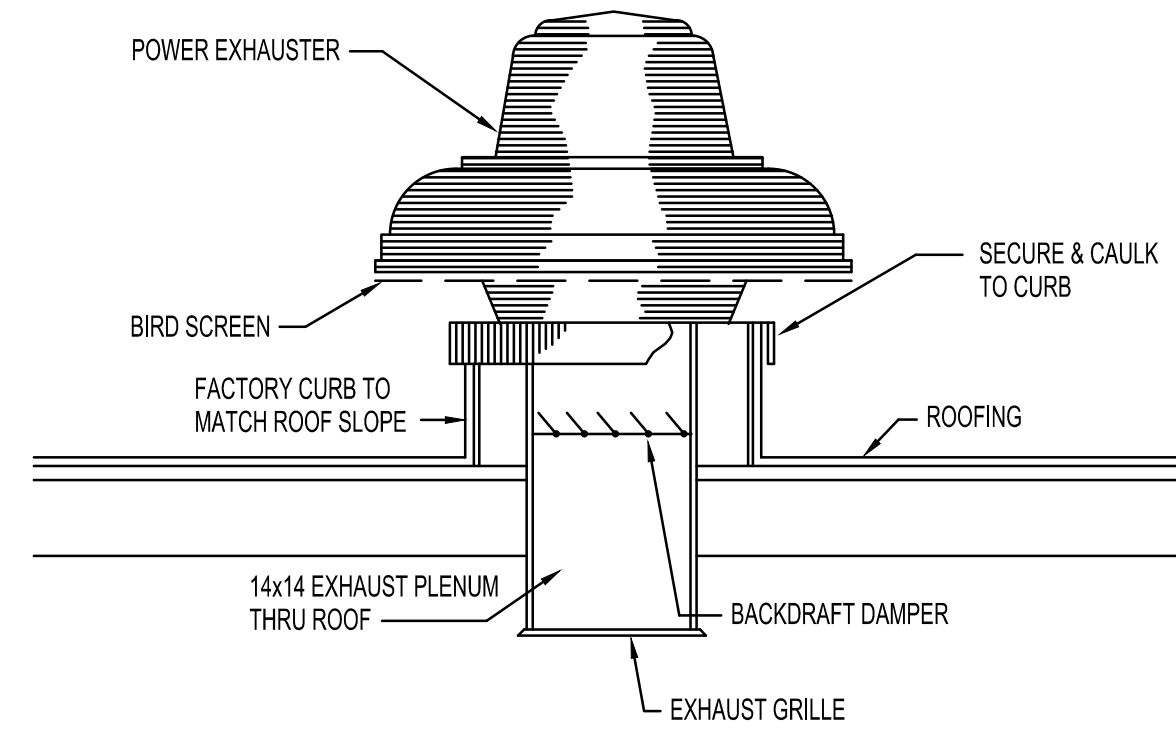
B AIR VOLUME CONTROL VALVE DETAIL

NO SCALE



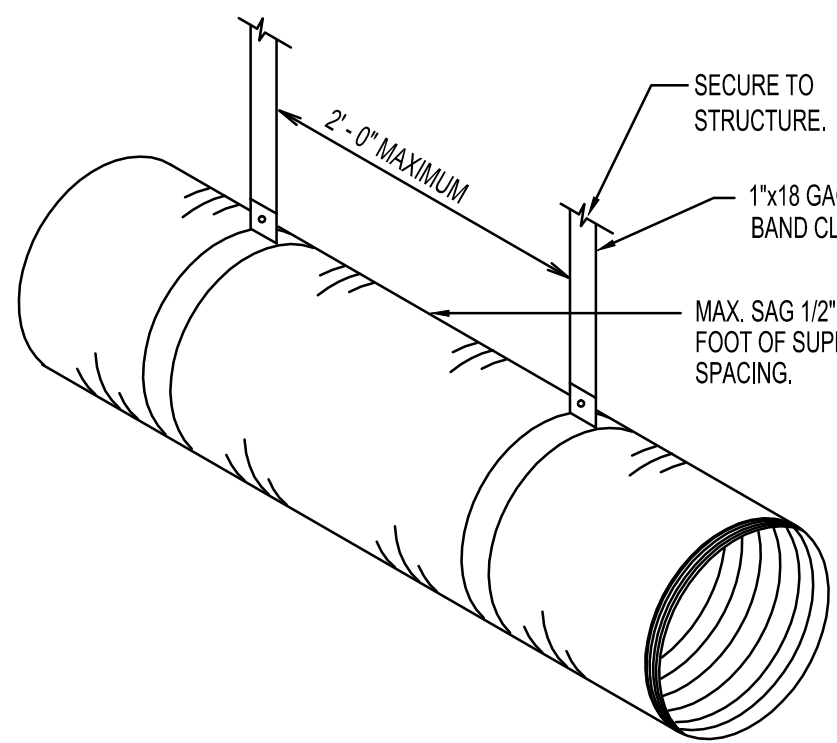
C TYPICAL ROOF CURB DETAIL

NO SCALE



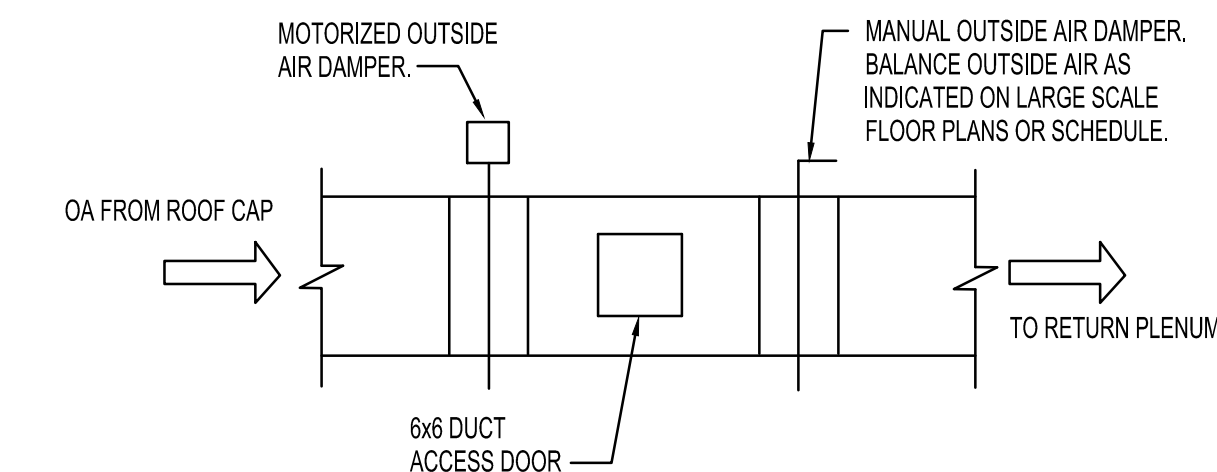
D ROOF MOUNTED EXHAUST FAN DETAIL

NO SCALE



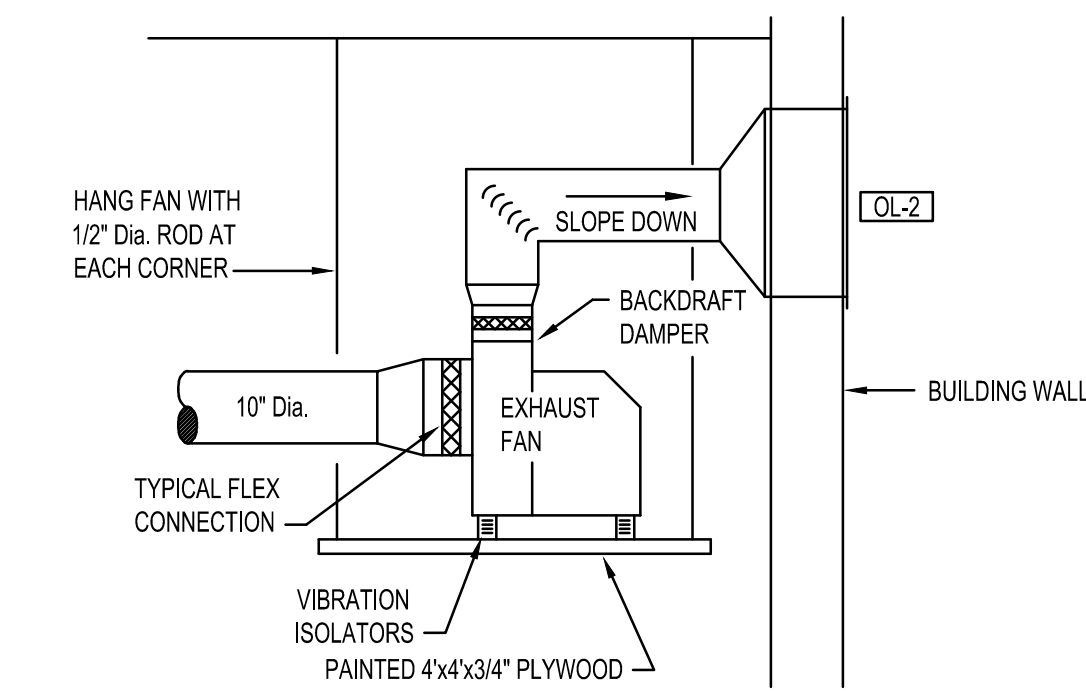
E FLEXIBLE DUCT SUPPORT DETAIL

NO SCALE



F OUTSIDE AIR DAMPER INSTALLATION

NO SCALE

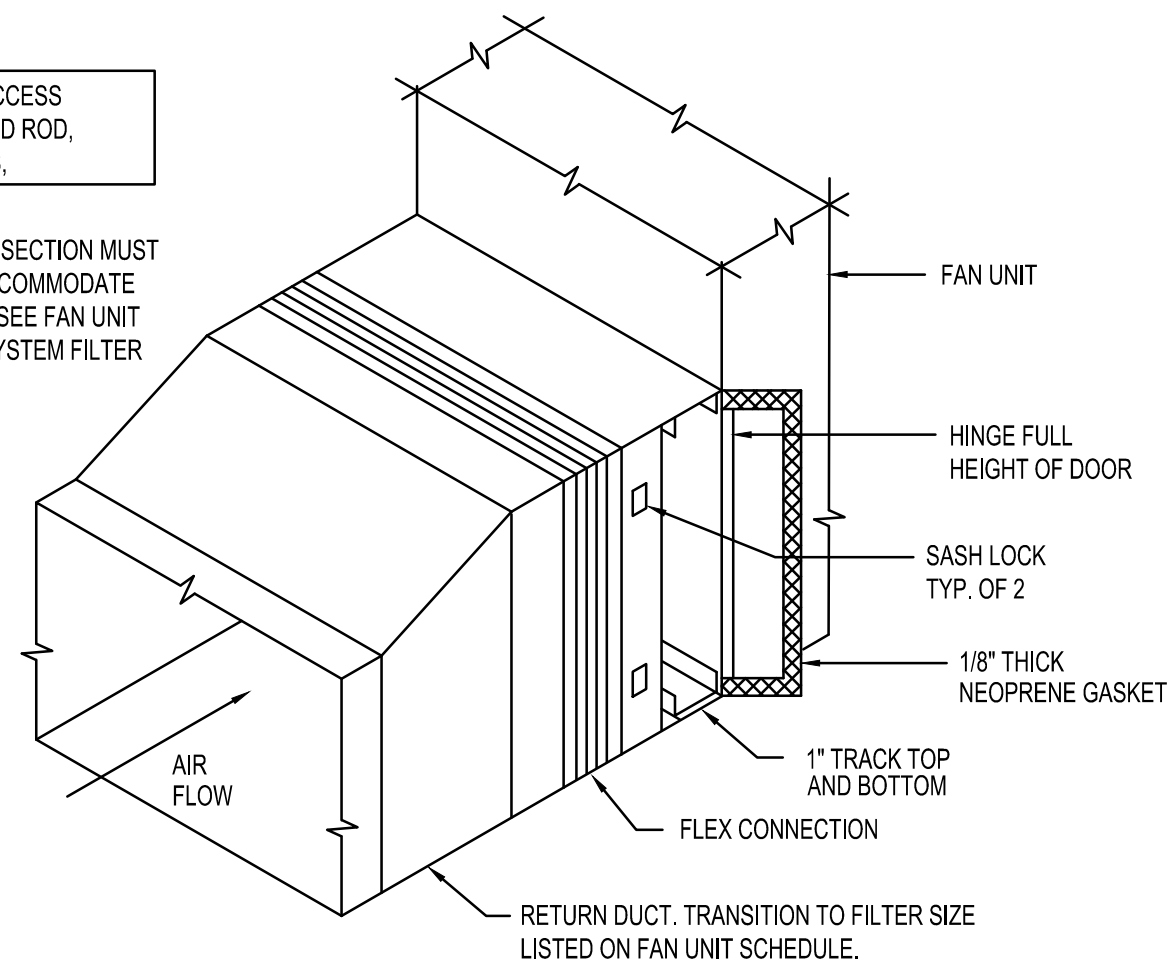


G VEHICLE EXHAUST FAN DETAIL

NO SCALE

DO NOT BLOCK FILTER ACCESS WITH CONDUIT, THREADED ROD, OR CONDENSATE DRAINS.

NOTE: EXTERNAL FILTER SECTION MUST BE CONSTRUCTED TO ACCOMMODATE STANDARD FILTER SIZE. SEE FAN UNIT SCHEDULE SHEET FOR SYSTEM FILTER SIZE.



H FILTER RACK DETAIL

NO SCALE

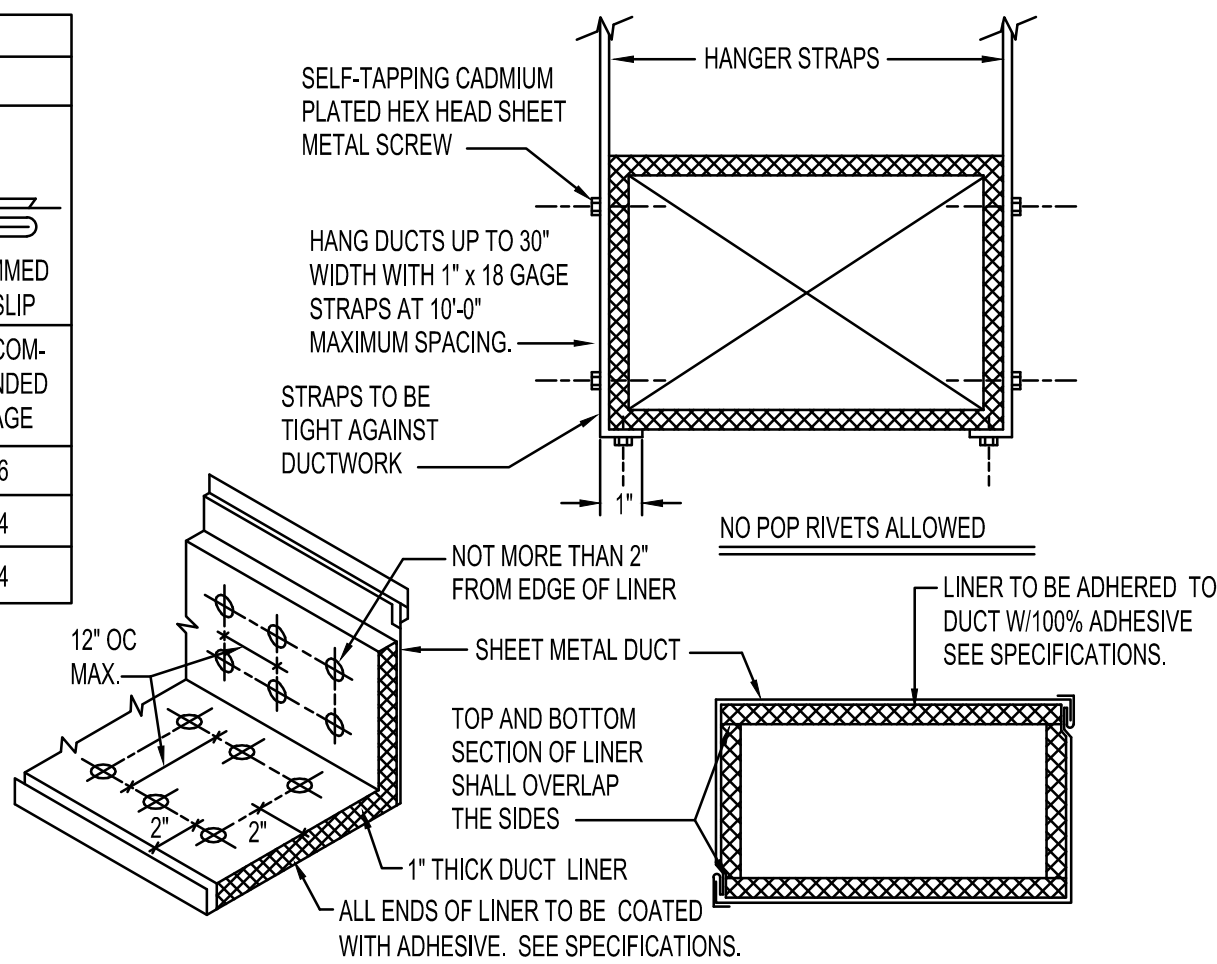
DIMENSION OF LONGEST SIDE, INCHES	SHEET METAL GAGE (ALL FOUR SIDES)	TRANSVERSE REINFORCING (1)	
		MINIMUM REINFORCING ANGLE SIZE AND MAXIMUM LONGITUDINAL SPACING BETWEEN TRANSVERSE JOINTS &/OR INTERMEDIATE REINFORCING	AT JOINTS
		DRIVE SLIP	HEMMED S SLIP
UP THRU 12	26	NONE REQUIRED	26
13 - 18	24	NONE REQUIRED	24
19 - 30	24	1"x1"x1/8" @ 60 IN	24

(1) TRANSVERSE REINFORCING SIZE IS DETERMINED BY DIMENSION OF SIDE TO WHICH ANGLE IS APPLIED.

METAL FASTENERS - O-MARK INSULPINS, DURO DYNE FASTENERS OR GRIPNAILS.

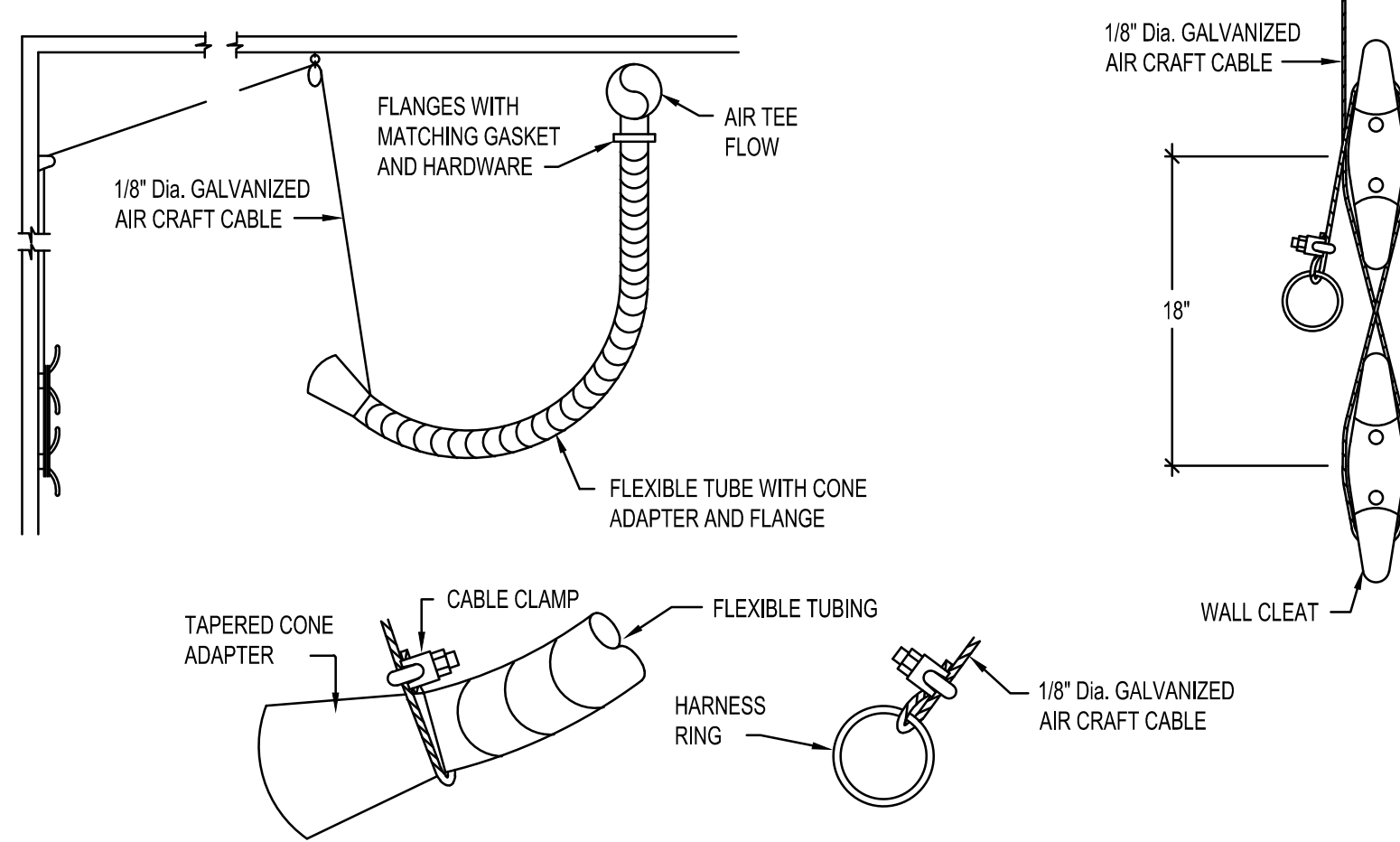
ENDS OF LINER SHALL BE BUTTED FIRMLY TOGETHER

GRIP NAILS SHALL BE INSTALLED BY GRIPNAIL AIR HAMMER OR BY AUTOMATIC FASTENER EQUIP.



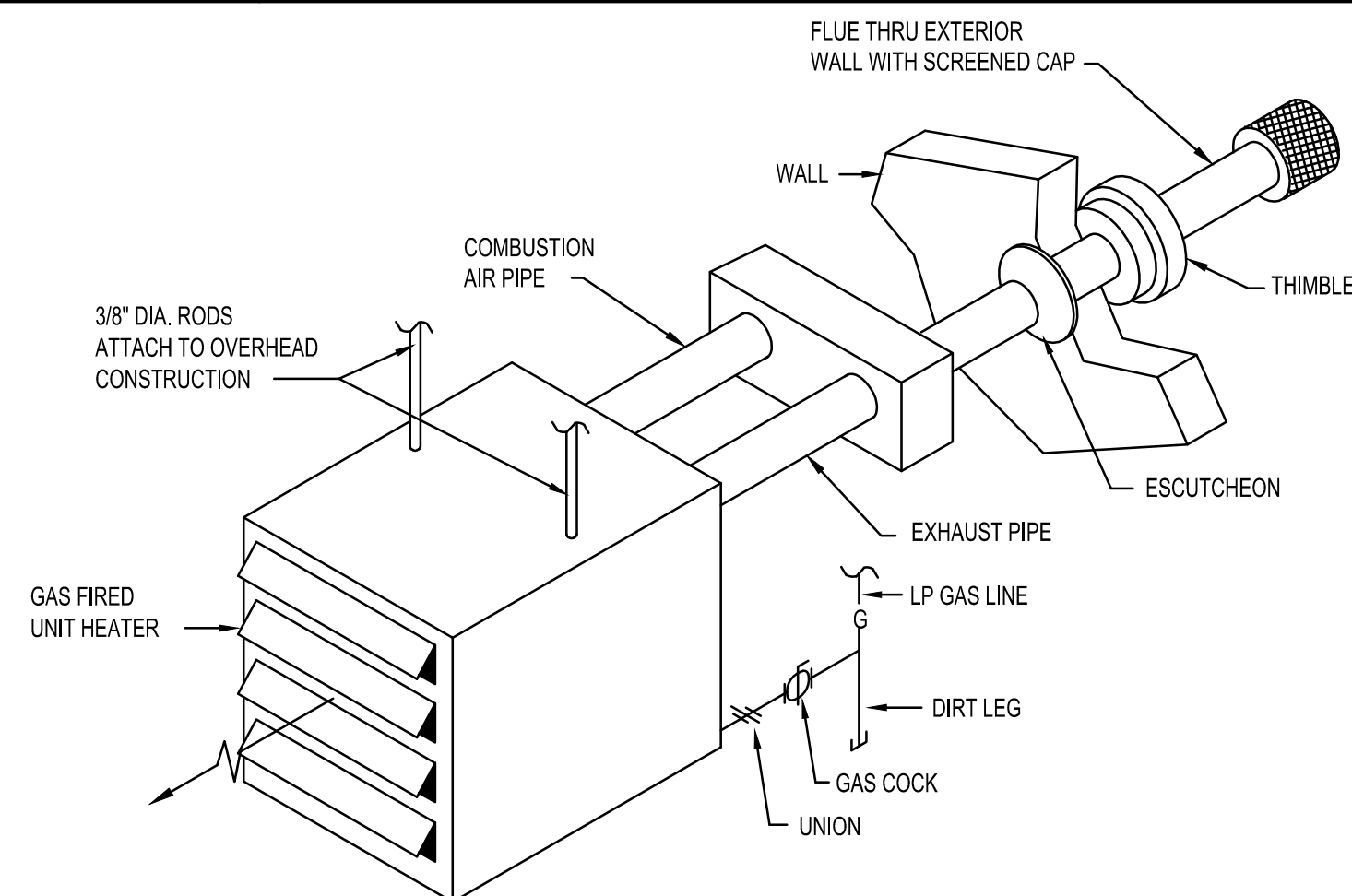
J DUCT CONSTRUCTION AND HANGER DETAIL

NO SCALE



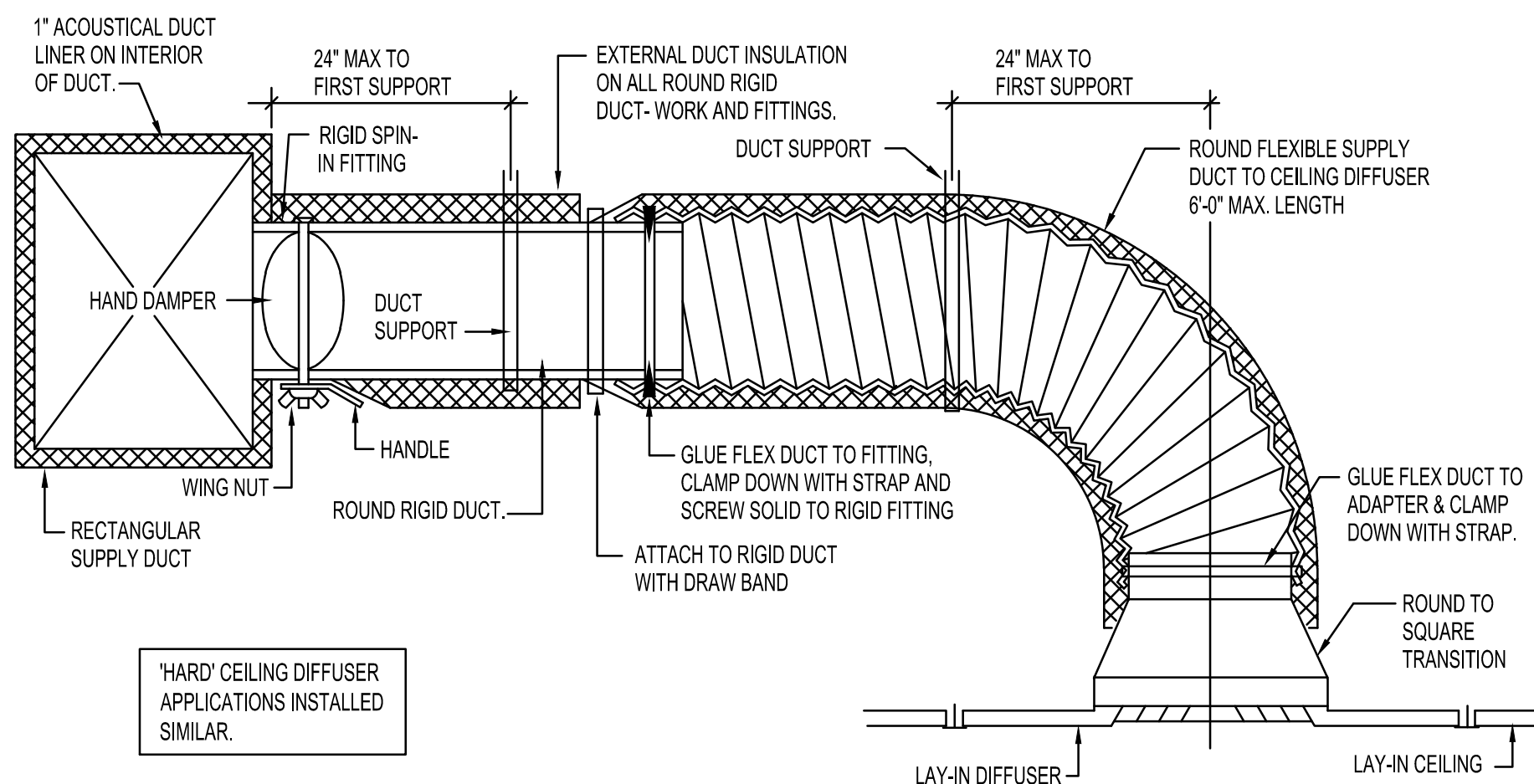
K VEHICLE EXHAUST SYSTEM DETAILS

NO SCALE



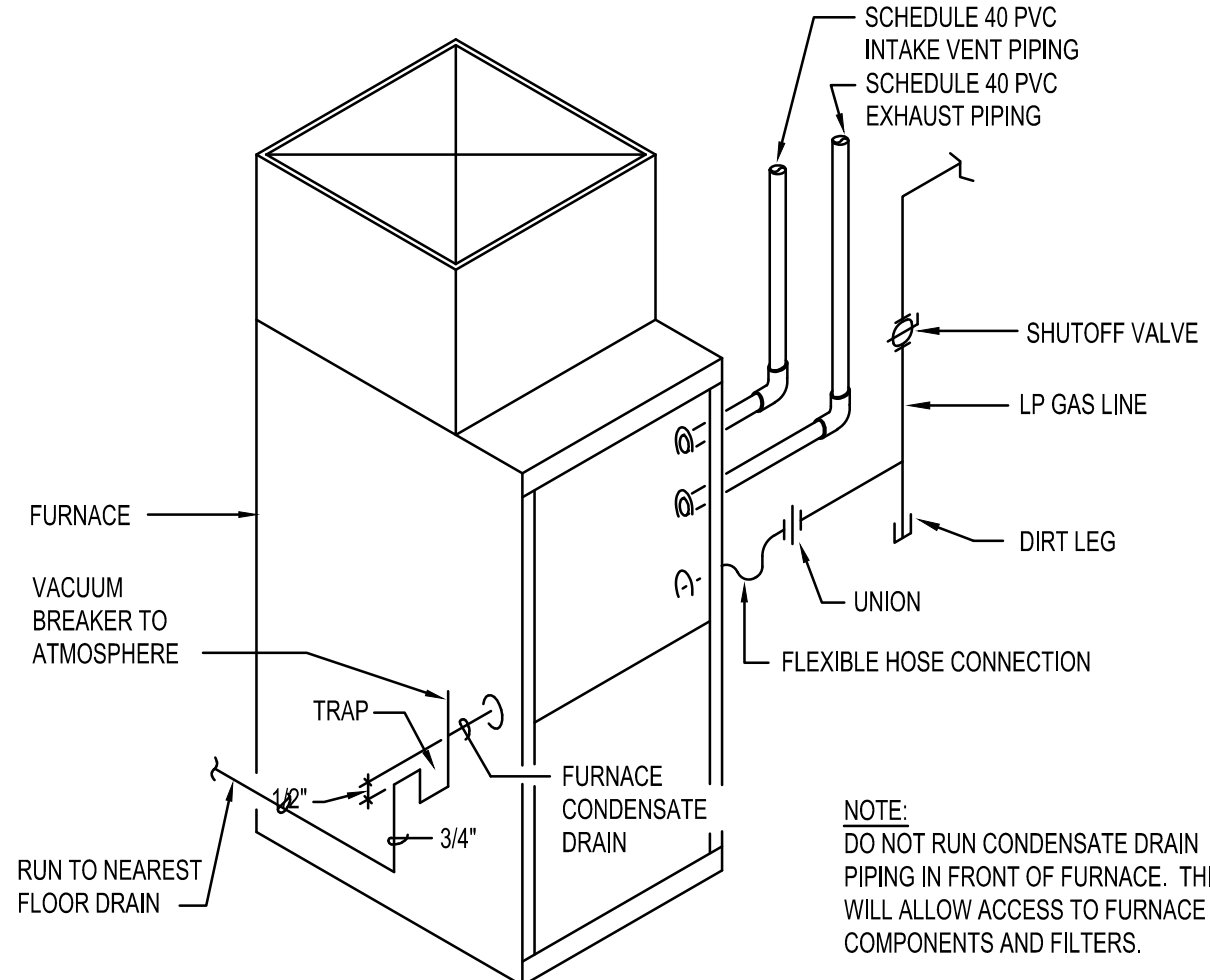
L UNIT HEATER INSTALLATION DETAIL

NO SCALE



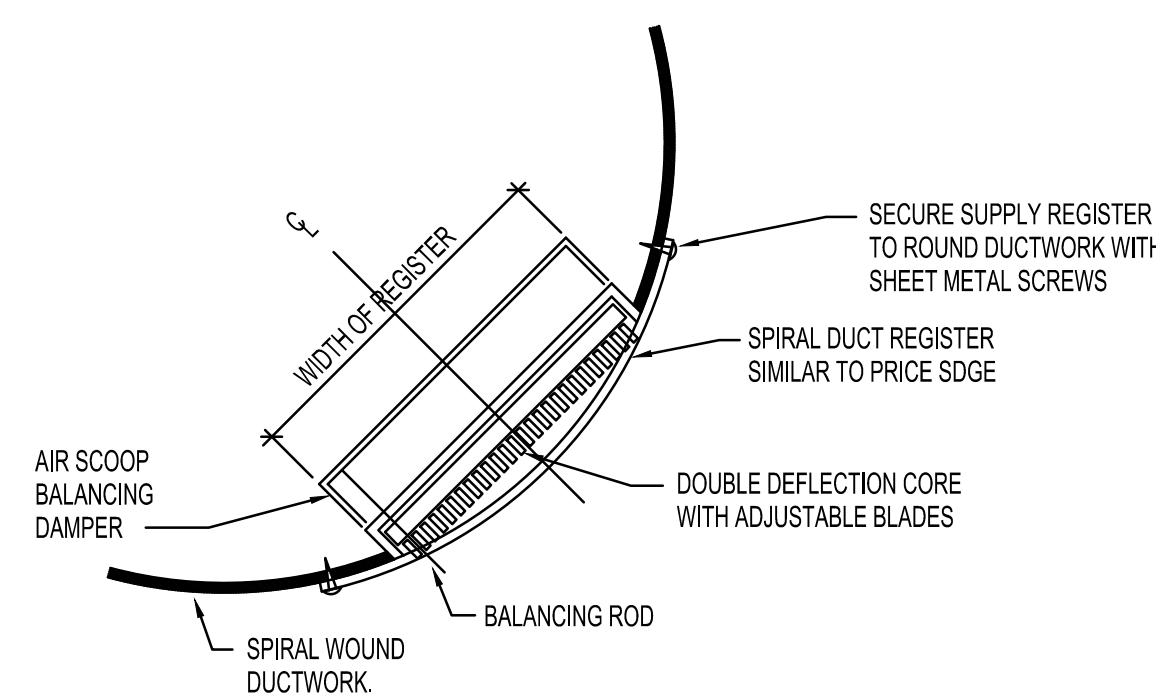
M CEILING DIFFUSER WITH FLEXIBLE DUCT DETAIL

NO SCALE



N FURNACE PIPING DETAIL

NO SCALE



O GYMNASIUM REGISTER INSTALLATION DETAIL

NO SCALE

revisions		
no.	description	date

project: 18003

date: 02/22/2019

MECHANICAL  
DETAILS

sheet: